



USB 2.0 10-Port Hub

User's Manual

Û^•ç }•ÑÚ! [à|^ { •Ñ
Y ^C^Á@!^Áç Á@] Â
Xã ãÁ ~]] [!dÈ | ~ * æà ^ È [{ Á !
^ { æãÁ ~]] [!O] | ~ * æà ^ È [{

Safety Instructions

Always read the safety instructions carefully:

- Keep this User's Manual for future reference.
- Keep this equipment away from humidity.
- If any of the following situation arises, get the equipment checked by a service technician:
 - The equipment has been exposed to moisture.
 - The equipment has been dropped and damaged.
 - The equipment has obvious sign of breakage.
 - The equipment has not been working well or you cannot get it work according to User's Manual.

Copyright Statement

No part of this publication may be reproduced in any form by any means without the prior written permission. Other trademarks or brand names mentioned herein are trademarks or registered trademarks of their respective companies.

Disclaimer

Information in this document is subject to change without notice. The manufacturer does not make any representations or warranties (implied or otherwise) regarding the accuracy and completeness of this document and shall in no event be liable for any loss of profit or any commercial damage, including but not limited to special, incidental, consequential, or other damage.

Table of Contents

Introduction	1
Features	1
Package Contents	1
Installation	1
Notice	3
Specifications	4

Introduction

Thank you for purchasing our USB 2.0 10-Port hub that allows you to add multiple high performance USB 2.0 peripheral devices to your computer. The USB 2.0 10-Port hub is fully compliant with the USB 1.1 specification, i.e., your previous USB 1.1 devices can continue to function as usual. The hub requires no complicated installing procedures. Just connect it to your computer and it's ready to use.

Features

- USB 2.0 high-speed interface, supports data rates of 1.5/12/480 Mbps
- Backwards compatible with USB 1.1
- Supports bus-powered (without power adapter) and self-powered (with power adapter) modes
- Plug-and-Play; hot-plugging
- Over-current detection and protection
- Automatic connection and speed detection

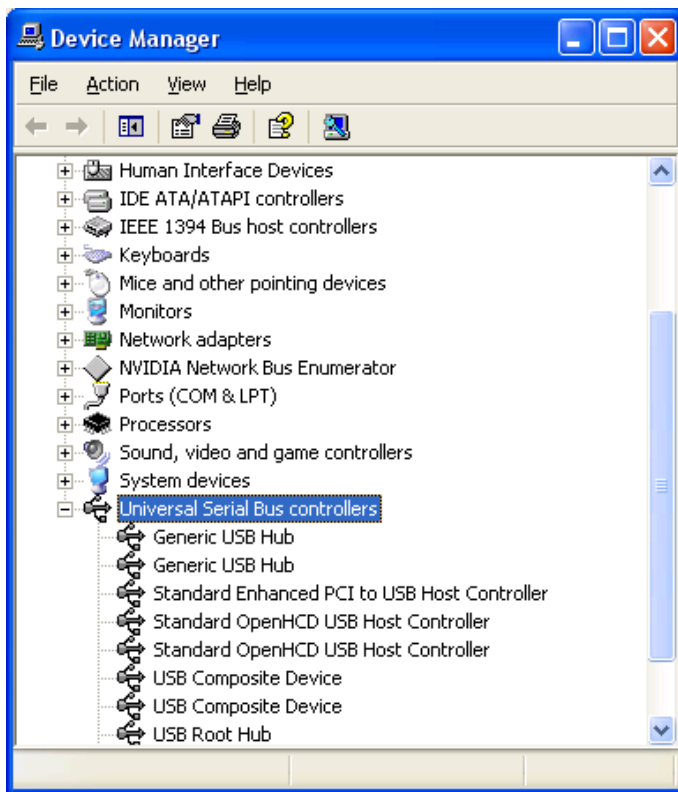
Package Contents

- | | |
|-----------------------|----|
| ■ USB 2.0 10-Port Hub | x1 |
| ■ Power Adapter | x1 |
| ■ USB Cable | x1 |

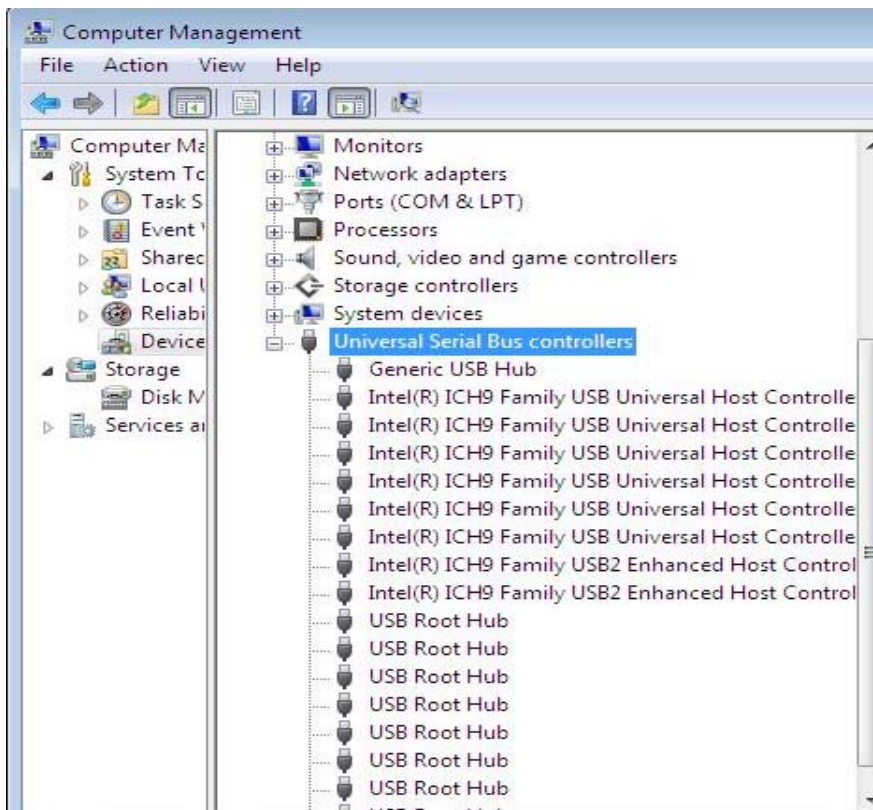
Installation

Connect the USB cable to your computer. (If your hub is not attached with a USB cable, use the provided USB cable and connect the smaller end to the hub's mini-USB port and the other end to your computer). After the connection, the system will detect the hub and automatically complete the installation.

Windows 2000/XP:

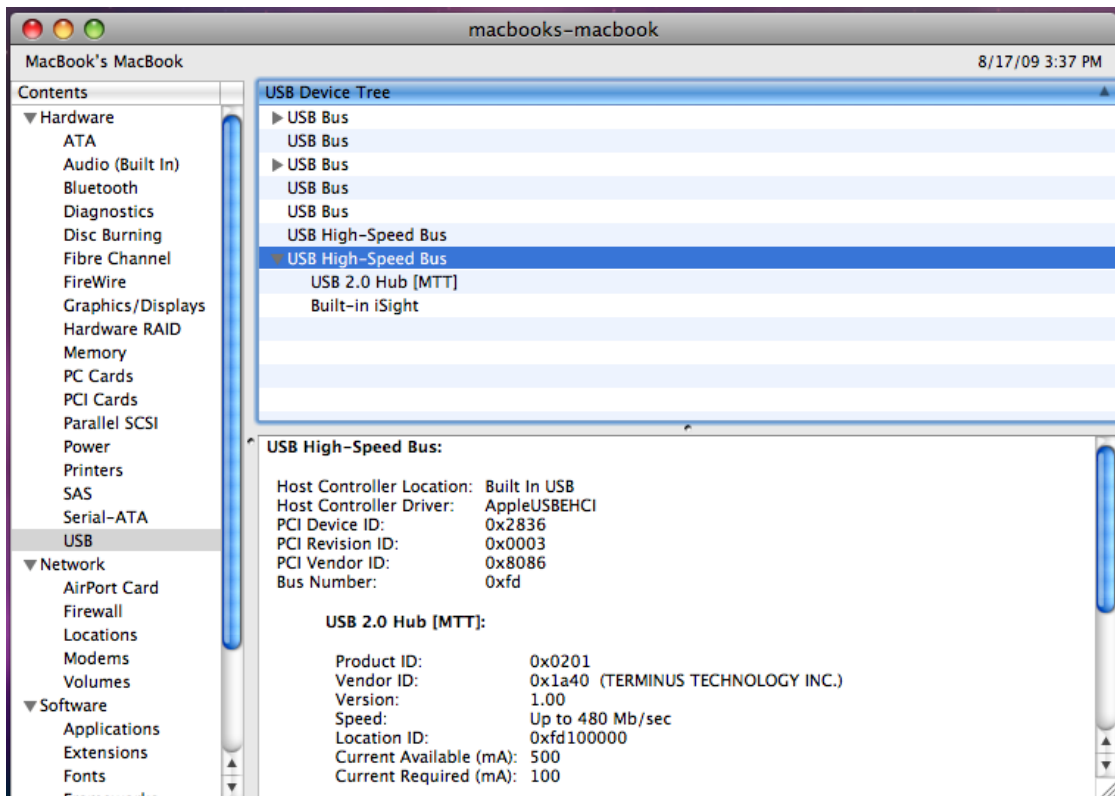


Windows Vista /Windows 7:



Under Windows: Go to **Device Manager** to verify the installation. Under the **Universal Serial Bus controller** group, an item **Generic USB Hub** should appear.

Mac OS:



Mac OS: Go to **Apple System Profile > Device and Volumes > USB** to verify the installation.

Notice

- Make sure to connect your USB device to the hub only after the auto-installation is completed.
- USB 2.0 performance (high-speed of up to 480 Mbps) can only be expected when connected to USB 2.0 port.
- The power adapter is recommended to use for connecting multiple USB devices.

Specifications

USB Interface	USB 2.0 High-Speed
Power Mode	Bus-powered mode (without power adapter) Self-powered mode (with power adapter)
Supported OS	Windows® 2000 , Windows® XP, Vista™ , Win 7 Mac OS 10.x & above
Certifications	CE, FCC